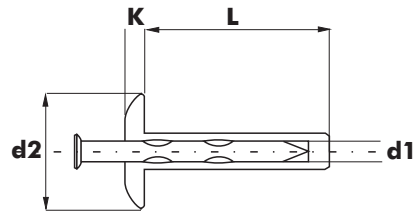
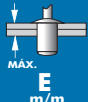

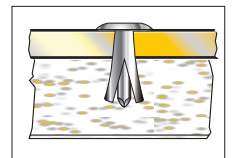
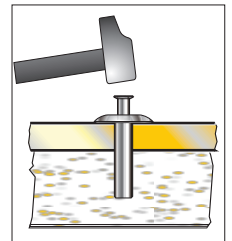




DRIVE RIVET

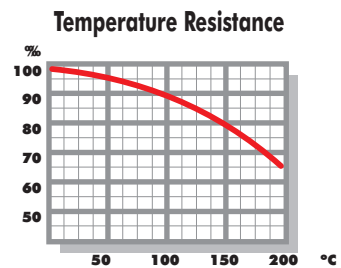


BODY: Aluminium Mg Si
MANDREL: Stainless Steel 305

d1 Ø m/m	L m/m	d2 Ø m/m	K m/m	M min. m/m	 MAX. E m/m		COD.
4,8	7,6	16,0	1,50	30,0	2,9 - 4,4	5,0 (+0,2)	G1509 00 4808
	10,2				4,4 - 7,0		G1509 00 4810
	12,7				7,0 - 9,5		G1509 00 4813
	15,3				9,5 - 12,1		G1509 00 4815
	17,8				12,1 - 14,6		G1509 00 4818
	20,3				14,6 - 17,1		G1509 00 4820
	22,9				17,1 - 19,7		G1509 00 4823
	25,4				19,7 - 22,2		G1509 00 4825
	27,9				22,2 - 24,8		G1509 00 4828
	30,4				24,8 - 26,5		G1509 00 4830
	35,0				26,5 - 31,5		G1509 00 4835
	40,0				33,0 - 35,5		G1509 00 4840
	50,0				43,5 - 46,0		G1509 00 4850



d1 Ø m/m	 (N)	 (N)
4,8	700	1.900



RAL